

# MONTHLY MEMBERSHIP PROGRESS REPORT

District 26 M2

Results as of: 5/31/2024

GMT:

LOCATION MISSOURI

GMT CA

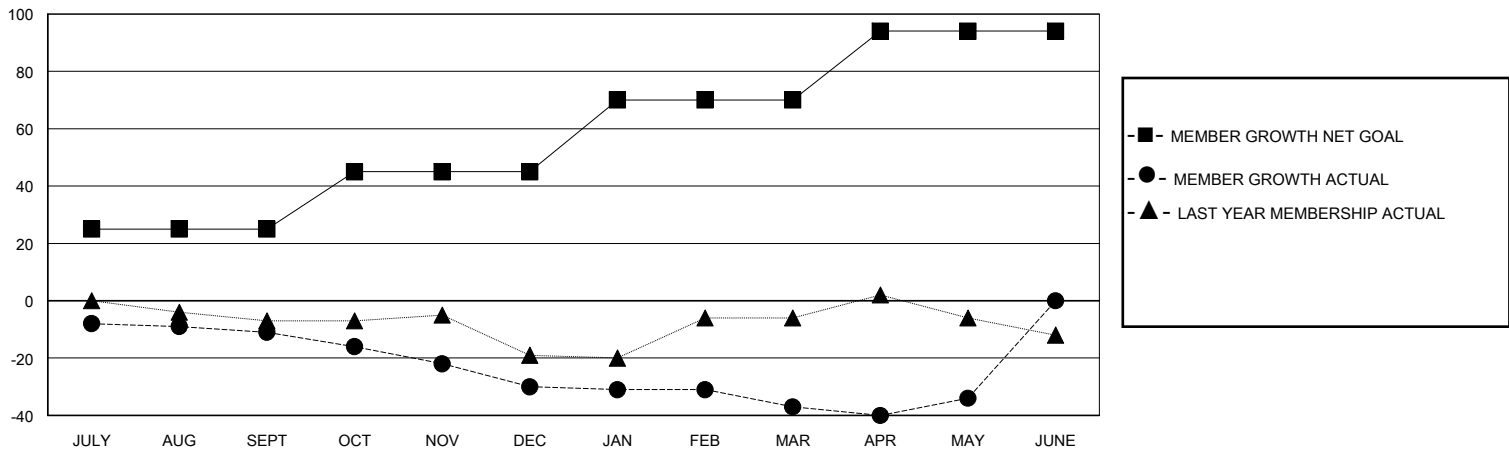
Clubs			
RESULTS FOR 2023-2024			
QUARTER	NEW CLUB GOAL	NEW CLUBS	DROPPED CLUBS
JULY/AUG/SEPT	0	0	0
OCT/NOV/DEC	1	0	0
JAN/FEB/MAR	0	0	0
APR/MAY/JUNE	0	0	0

Members			
RESULTS FOR 2023-2024			
QUARTER	MEMBER GROWTH NET GOAL	MEMBER GROWTH ACTUAL	DROPPED MEMBERS ACTUAL (including transfers)
JULY/AUG/SEPT	25	19	23
OCT/NOV/DEC	20	15	29
JAN/FEB/MAR	25	11	16
APR/MAY/JUNE	24	20	14

**GOALS AND ACTUAL NEW CLUBS CUMULATIVE**



**GOALS AND ACTUAL MEMBERS CUMULATIVE**



DROPPED CLUBS: 0	17 CLUBS OF 37 ADDED 1 OR MORE NEW MEMBERS	<b>GENDER DISTRIBUTION</b>
<b>DROPPED MEMBERS</b>		MALE 792 (70.59%)
DECEASED 15		FEMALE 330 (29.41%)
CLUB CANCELLED 0	<a href="#">CLICK HERE FOR CUMULATIVE MEMBERSHIP DATA</a>	TOTAL FAMILY UNIT MEMBERS 246
OTHER 67		FAMILY MEMBERS PAYING HALF DUES 130
<b>TOTAL 82</b>		